

Fig 1 Location map



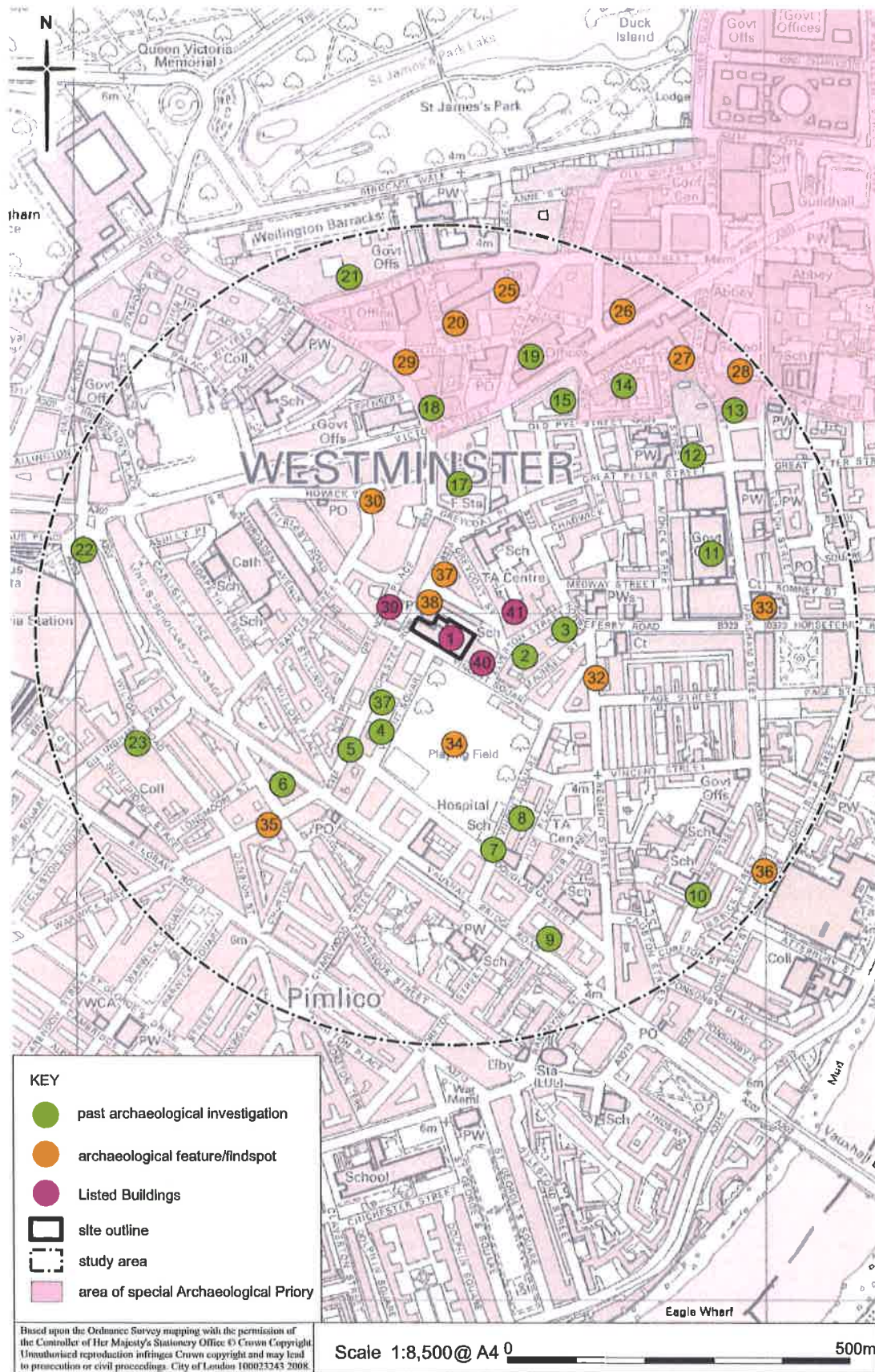


Fig 2 Archaeological features map



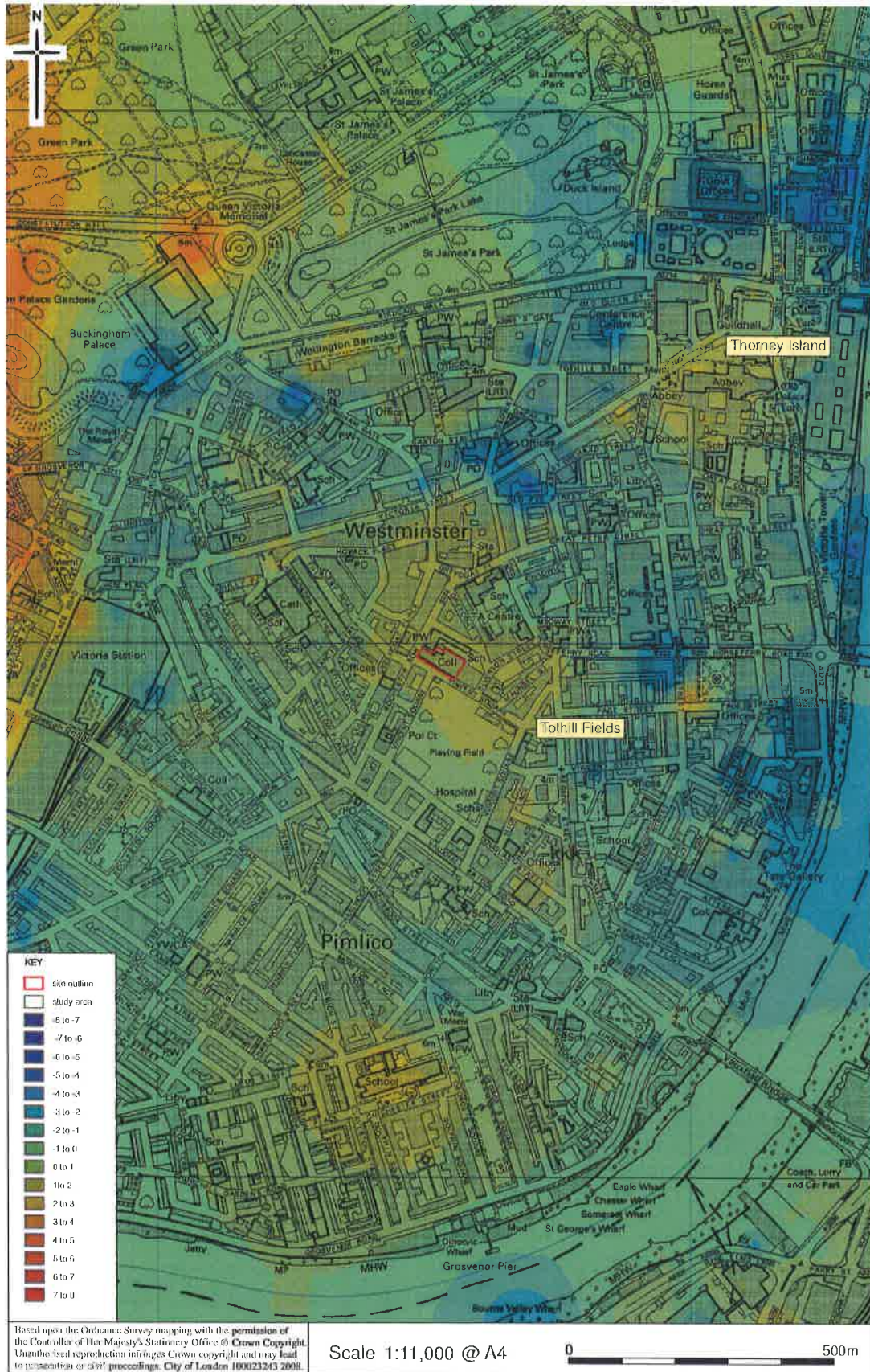


Fig 3 Geology of the site and study area



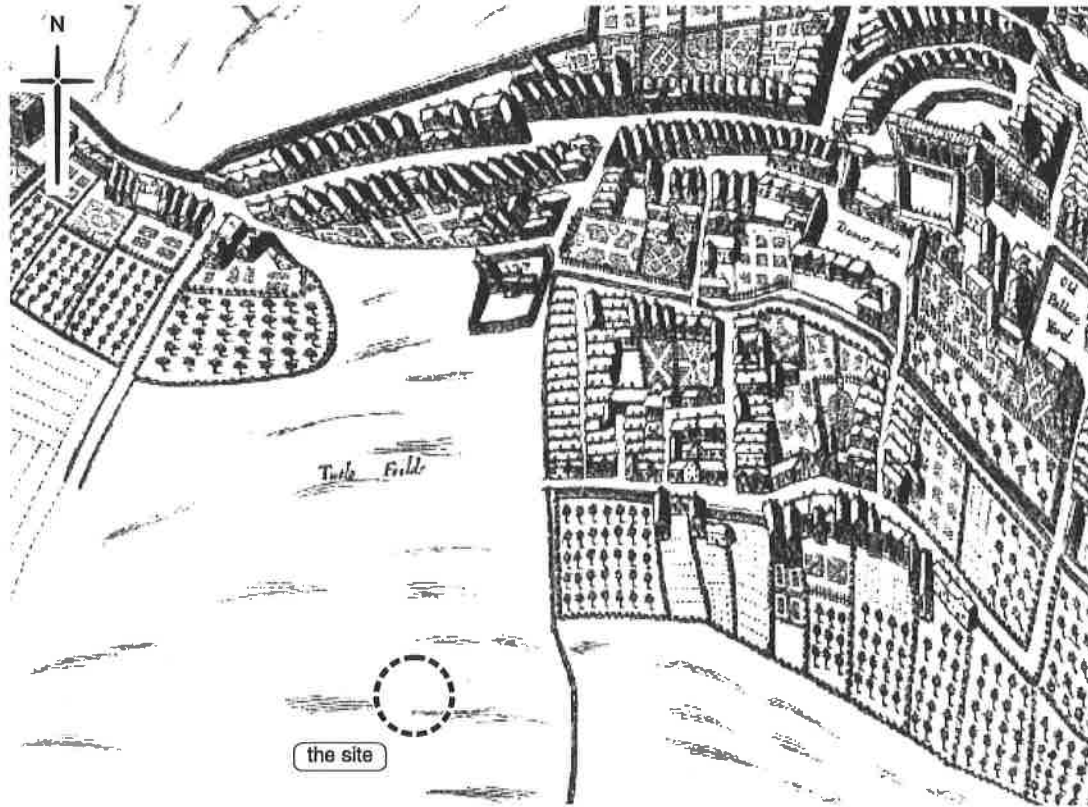


Fig 4 Faithorne and Newcourt's map of 1658

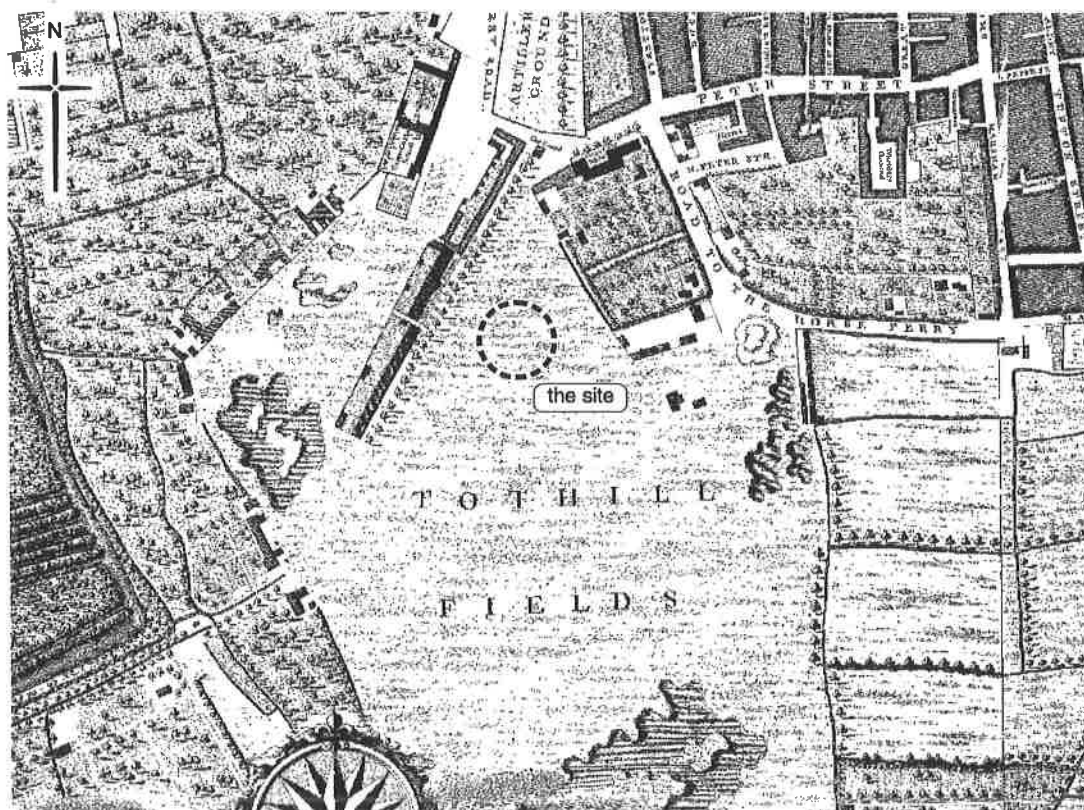


Fig 5 Rocque's map of 1746

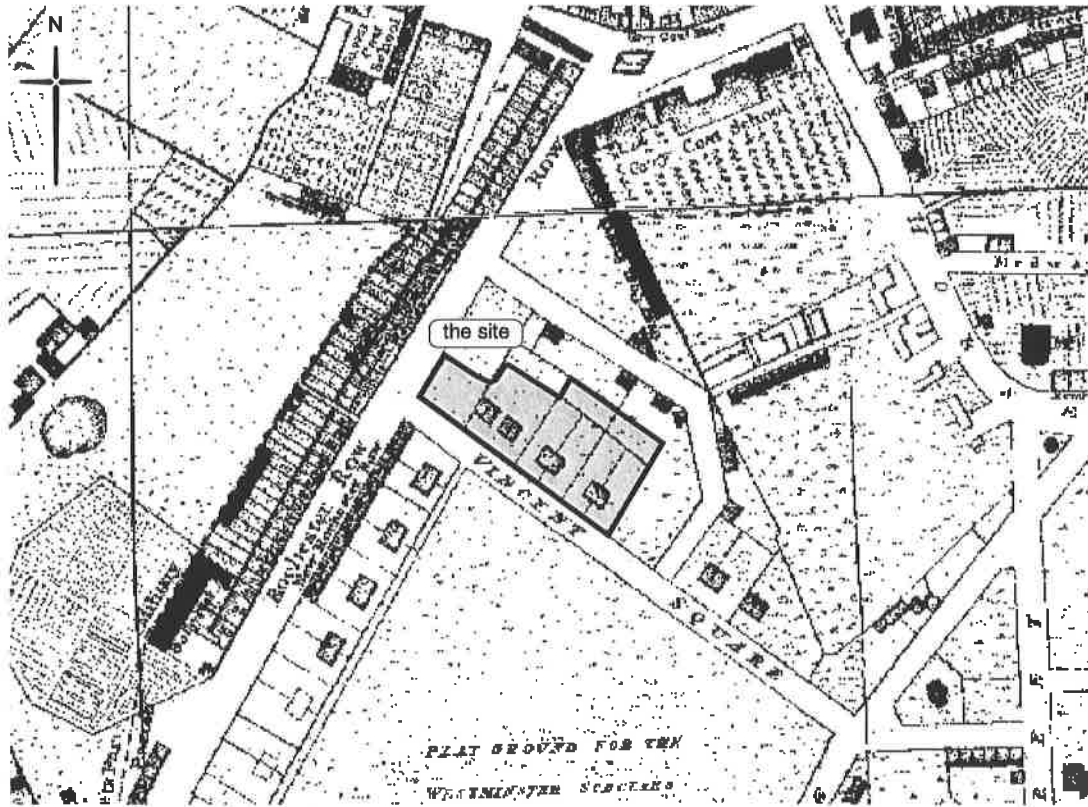


Fig 6 Horwood's map of 1799

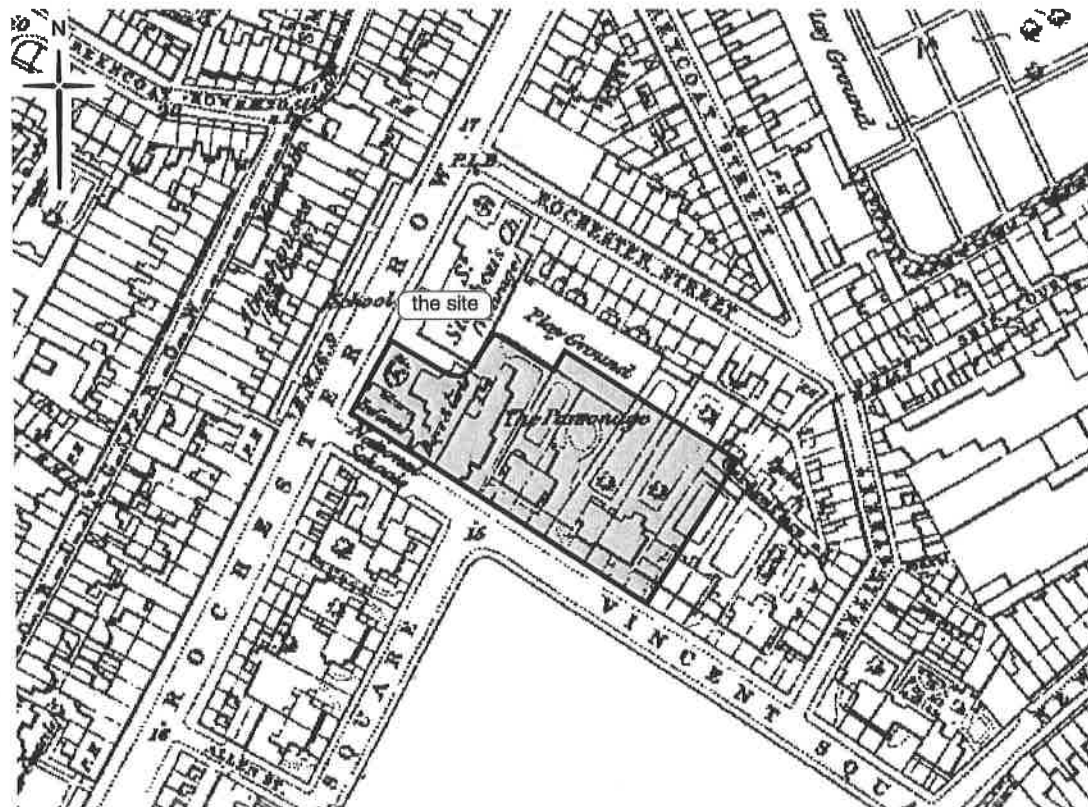


Fig 7 Ordnance Survey 1st edition 25" map of 1869 (not to scale)

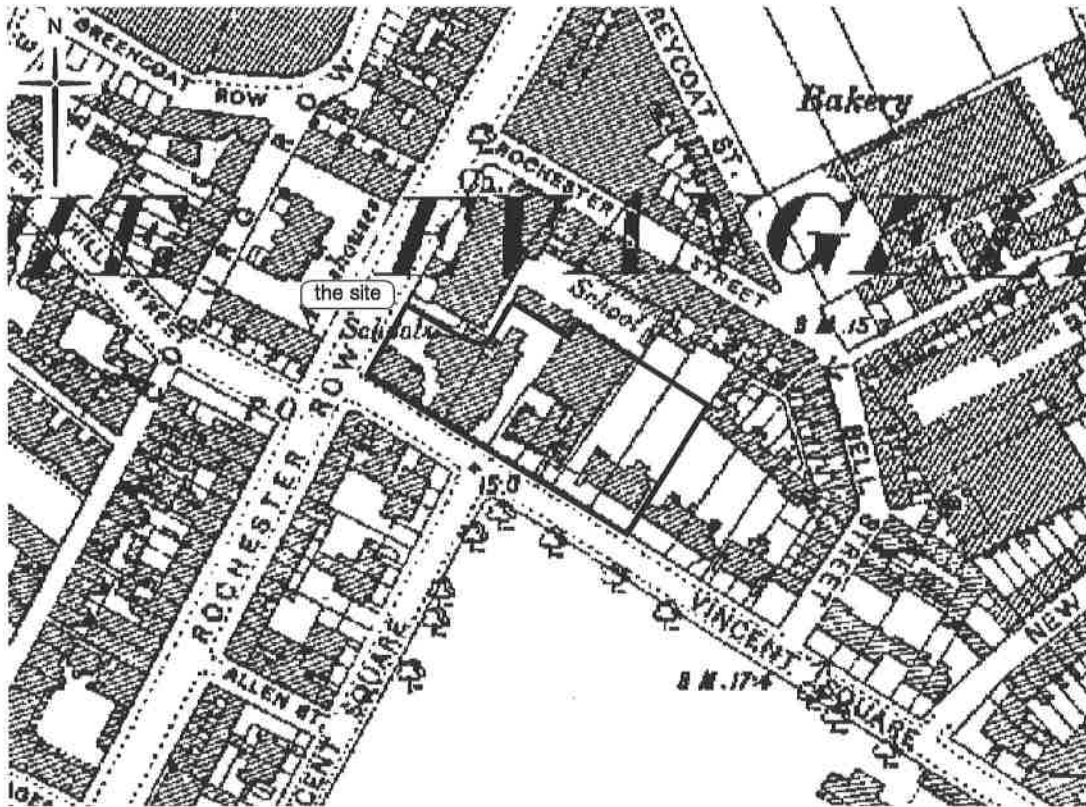


Fig 8 Ordnance Survey 2nd edition 25" map of 1894 (not to scale)

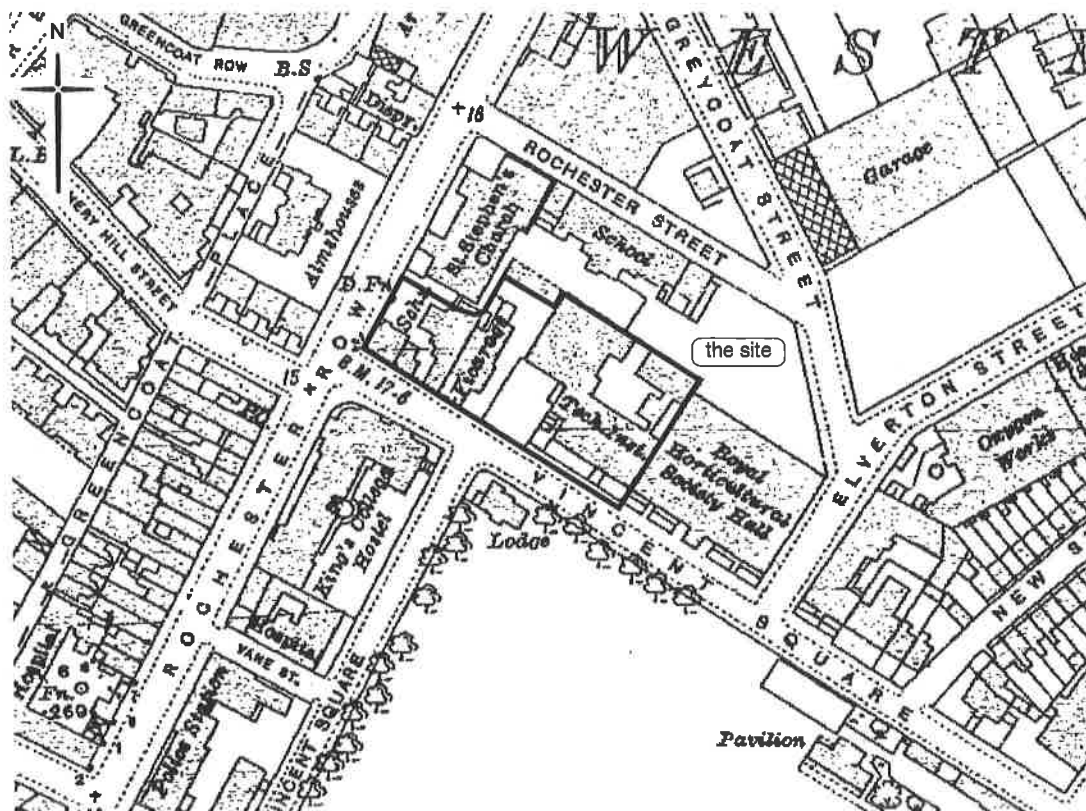


Fig 9 Ordnance Survey 3rd edition 25" map of 1916 (not to scale)





Fig 10 Ordnance Survey 1:1250 scale map of 1950

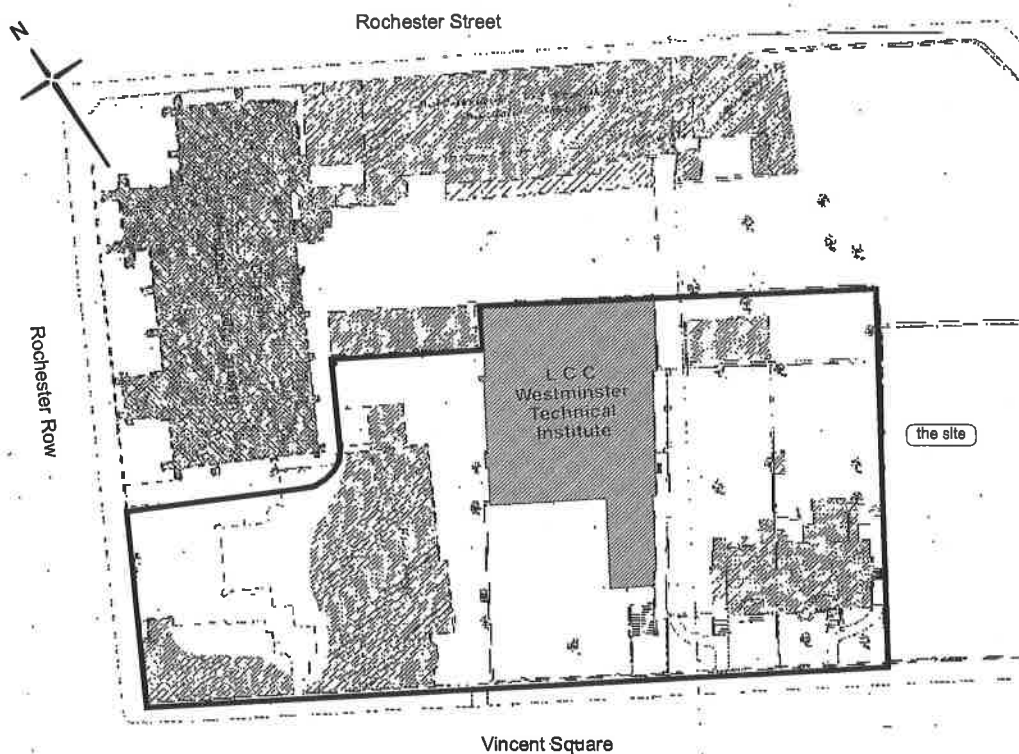


Fig 11 London Council Architects Records Plan of the site of 1932

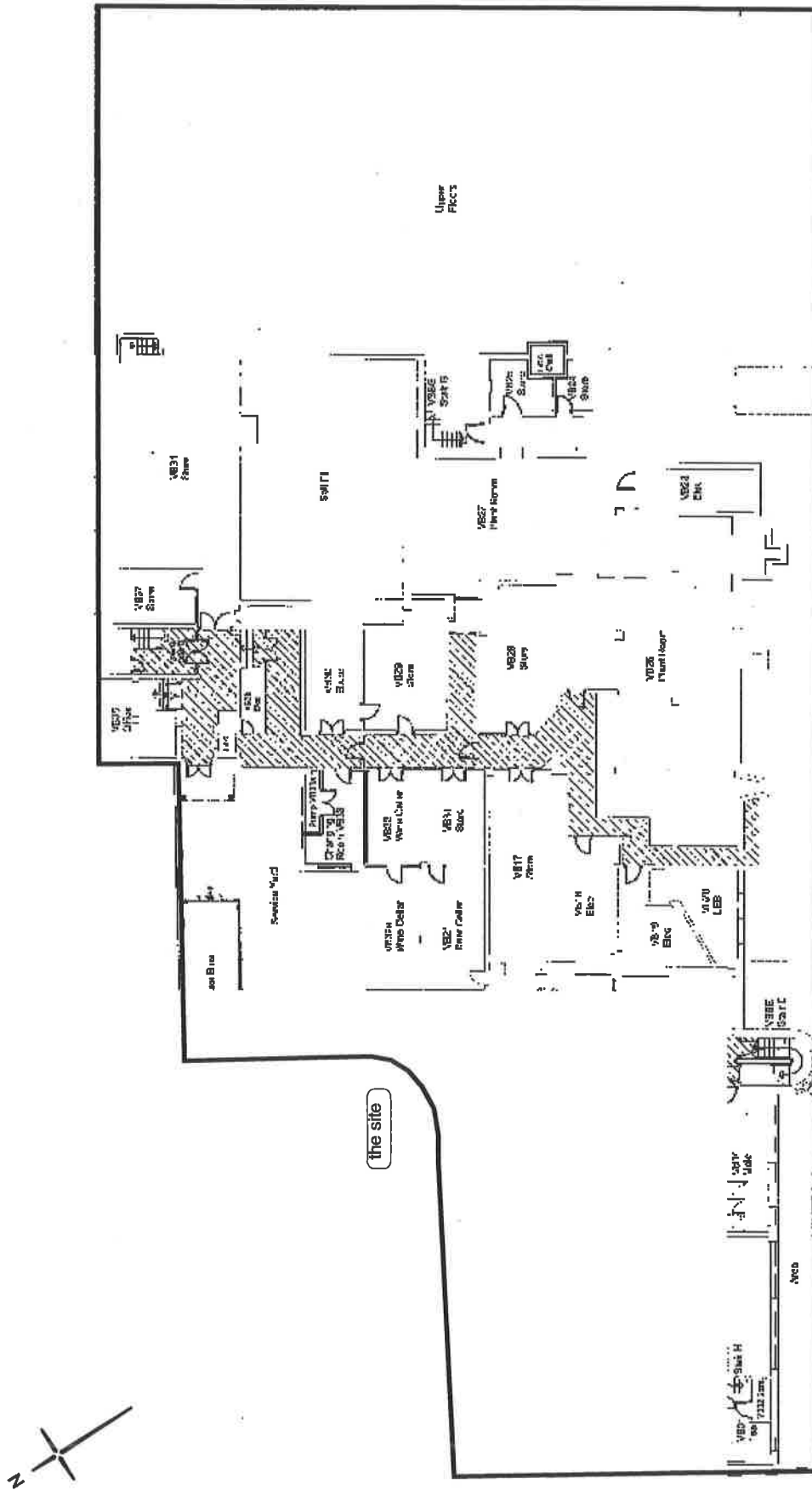


Fig 13 Plan of the existing basement (WK drwg VC-EP-03 dated January 2007)



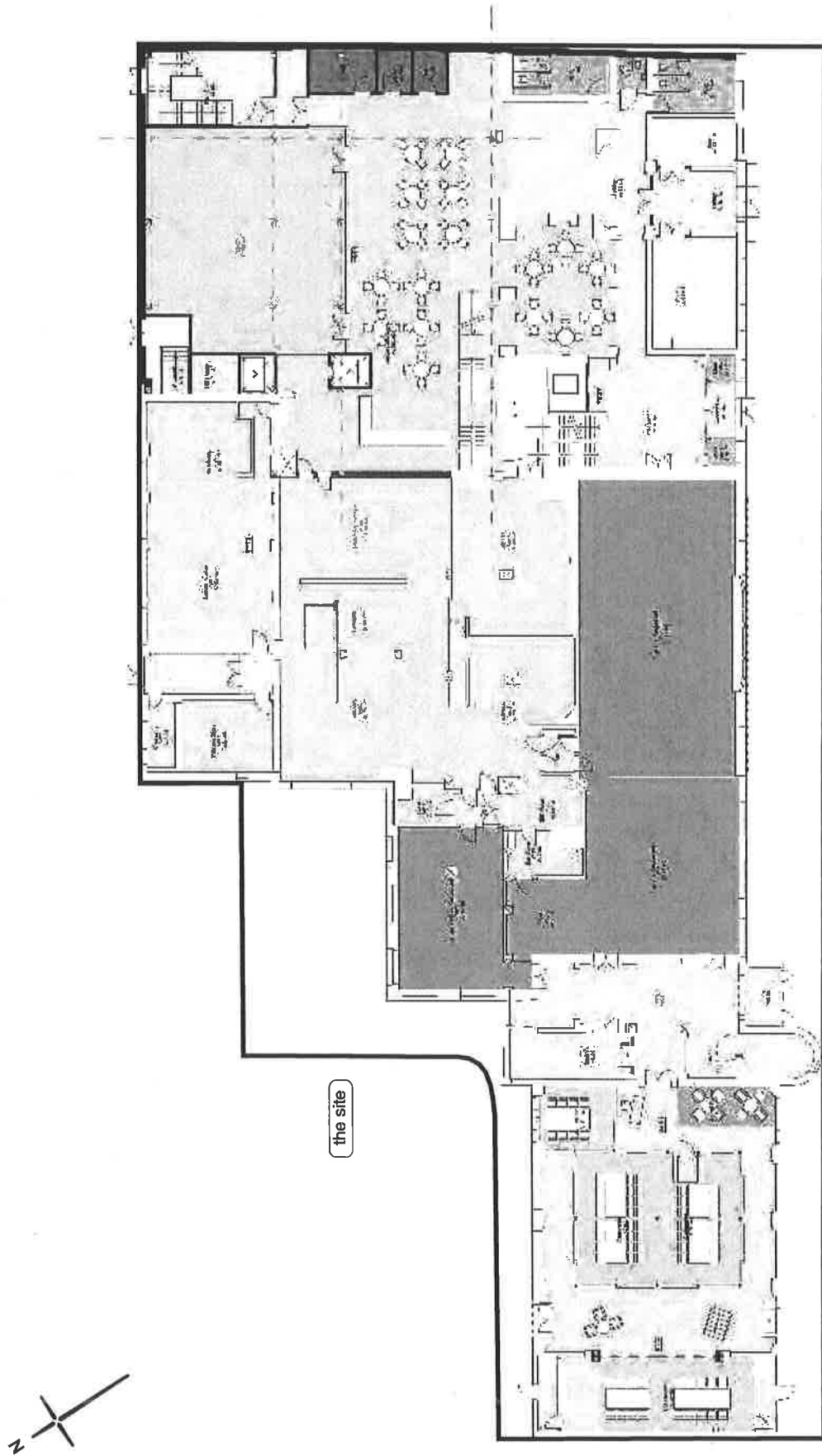


Fig 14 Plan of proposed ground floor showing new interior arrangement within existing building (Bond Bryan Architects drwg 07-036 SK 138 dated 02.07.08)

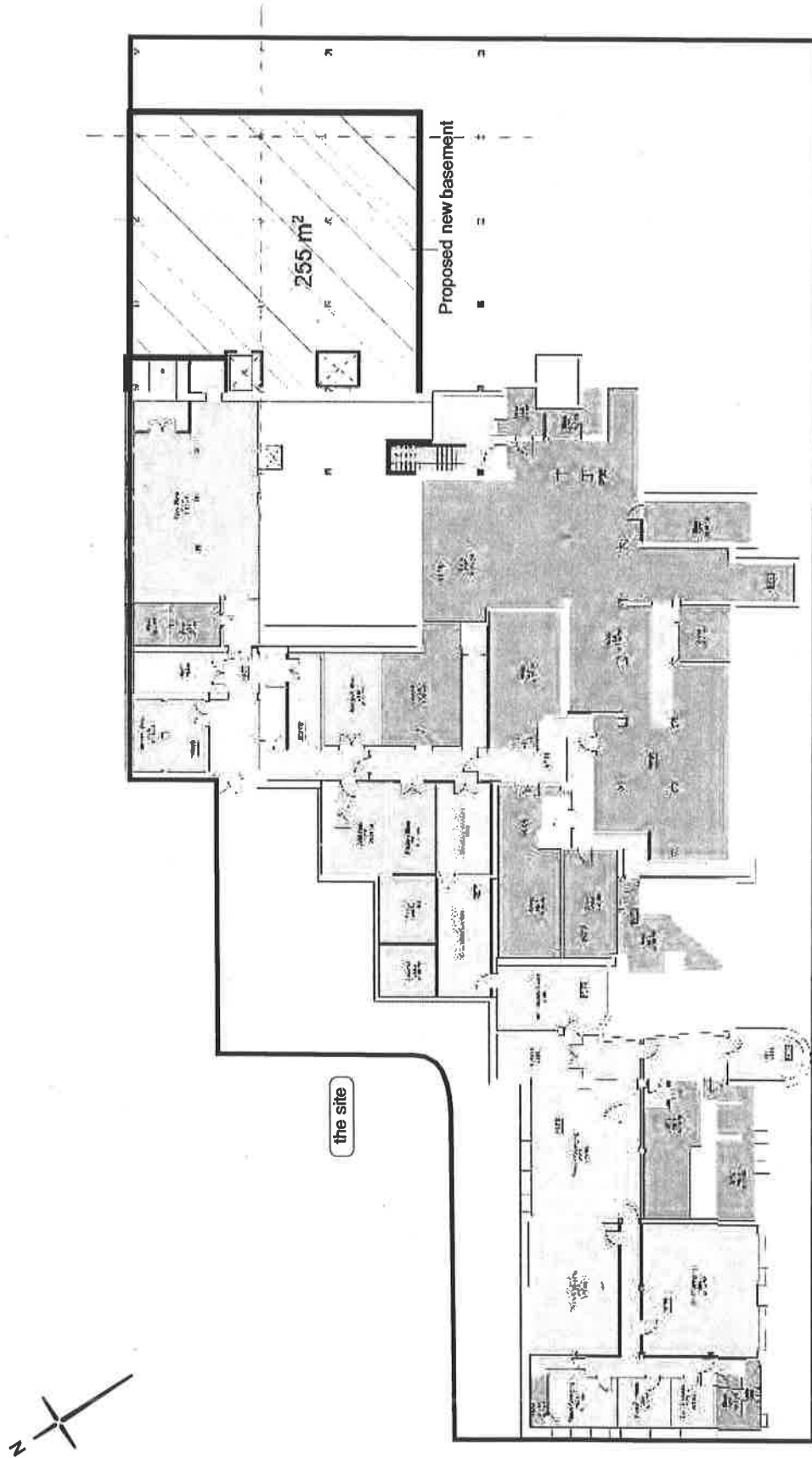


Fig 15 Proposed layout of existing basement and proposed new basement (Bond Bryan Architects drwg 07-036 SK 143 dated 02.07.08)



